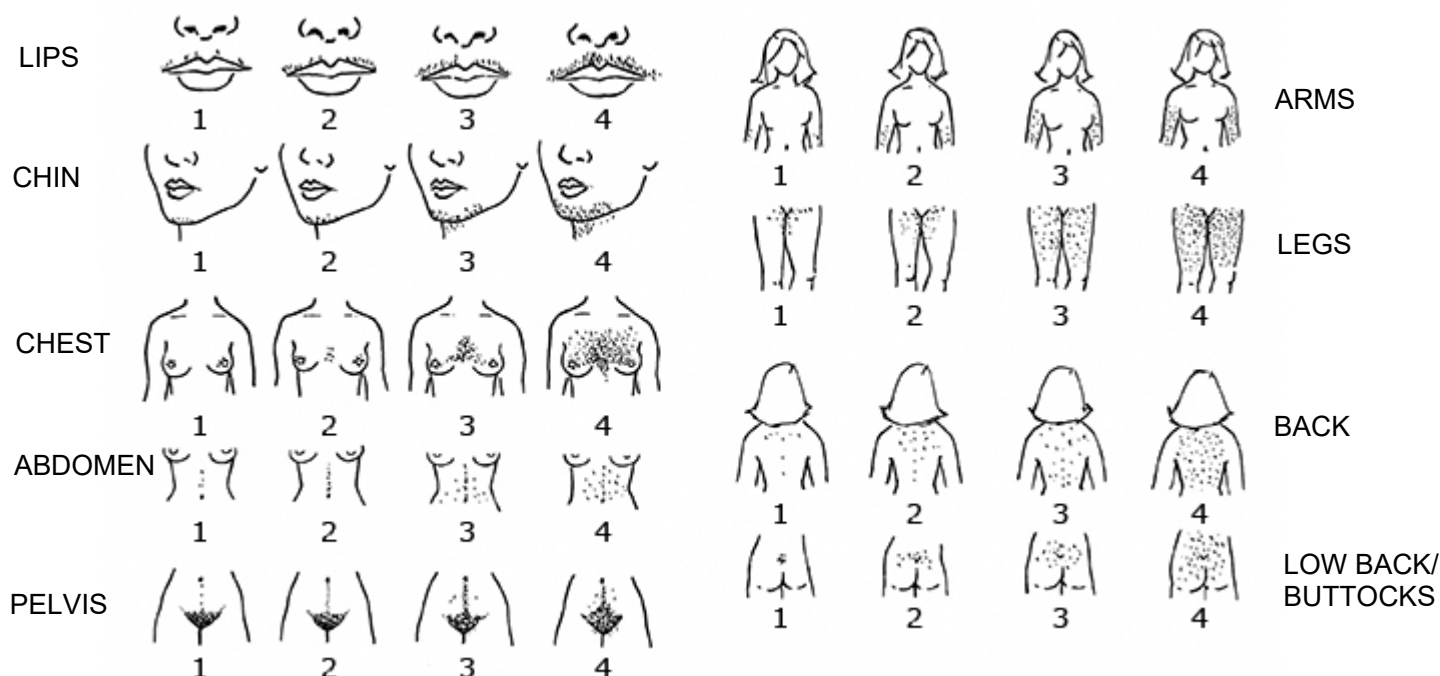


Grading of severity of hirsutism in women



Ferriman-Gallwey hirsutism scoring system. Each of the 9 body areas that is most sensitive to androgen is assigned a score from 0 (no hair) to 4 (frankly virile), and these are summed to provide a hormonal hirsutism score. "Focal" hirsutism (score 1 to 7) is a common normal variant, whereas generalized hirsutism (score of 8 or more) is abnormal in the general United States population. The normal score is lower in Asian populations and higher in Mediterranean populations.

Reproduced with permission from: Hatch R, Rosenfield RS, Kim MH, Tredway D. Hirsutism: implications, etiology, and management. *Am J Obstet Gynecol* 1981; 140:815. Copyright © 1981 Elsevier.

Graphic 66629 Version 9.0

INSTRUCTIONS FOR OKANAGAN WOMEN'S CLINIC PATIENTS:

PLEASE GO THRU EACH OF THE 9 BODY AREAS AND CIRCLE NUMBER 1-4. IT IS IMPORTANT TO FILL IT OUT BASED ON WHAT YOUR HAIR GROWTH WAS LIKE BEFORE WAXING/SHAVING/LASER OR OTHER FORMS OF HAIR REMOVAL. RETURN TO US BY EMAIL. OR JUST ADD UP YOUR SCORE AND EMAIL US YOUR TOTAL SCORE. THANKS.